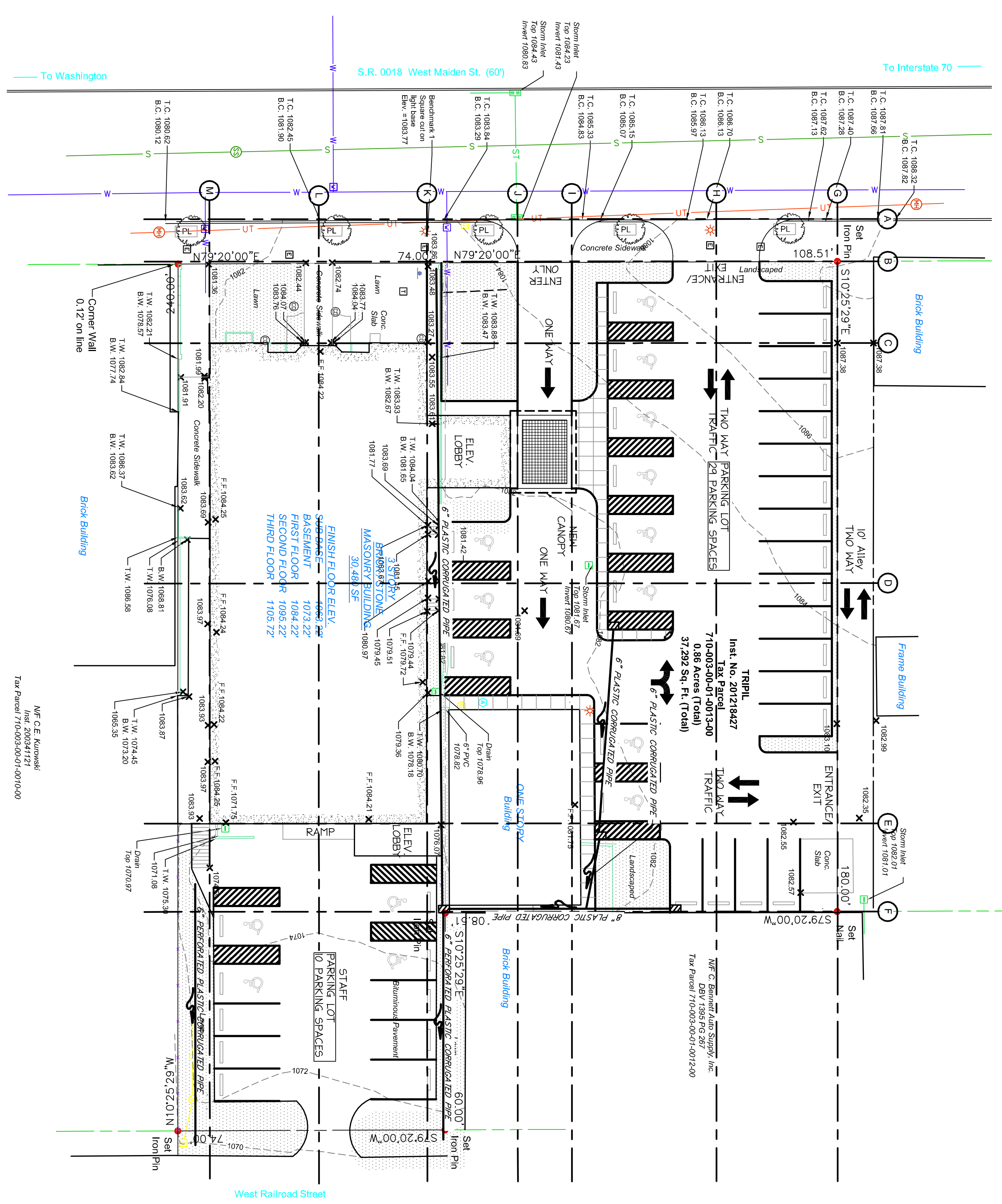


**LEGEND**

- Bolland
- Cleanout
- Elec-Box
- Fire Hydrant
- Gas Meter
- Gas Valve
- Light
- Mailbox
- Paint-Stripe
- Sanitary
- Sanitary-MH
- Spot-Elev
- Storm
- Storm-Inlet
- Storm-Yard-Drain
- Telephone Underground
- Utility-MH
- Water
- Water-Valve
- Planter
- Trans-Pad
- Sign
- Air Conditioning Unit
- Wall-Top Elevation
- Wall-Bottom Elevation
- Finish Floor Elevation
- Curb-Top Elevation
- Curb-Bottom Elevation
- Landscaping



**PROPOSED SITE PLAN**

1  
03.11  
1"=20'  
0.86 ACRES

© 2013 C&S SERVICES - These architectural plans and images are copyrighted and are subject to copyright protection as an architectural work under Section 106 of the Copyright Act of 1976, as amended December 1, 1990. The protection includes but is not limited to, the overall form as well as the arrangement and composition of spaces and elements of the design.

**C&S SERVICES**  
506 VALLEYBROOK RD.  
MCALPHERY, PA 15317  
P: 412.281.5050  
F: 412.281.4877  
EMAIL: KKulak@C&Sservices.com

**TRIPIL HEADQUARTERS & TRAINING CENTER**  
42 WEST MAIDEN STREET  
WASHINGTON, PA 15301  
CITY OF WASHINGTON WASHINGTON COUNTY

PROJECT:	TRIPIL HEADQUARTERS & TRAINING CENTER
LOCATION:	42 WEST MAIDEN STREET, WASHINGTON, PA 15301
DATE:	11-2-15
SCALE:	AS NOTED
TITLE:	PROPOSED SITE PLAN
SHEET:	C12
ISSUE SUBMISSION:	12-13-12
SCHEMATIC:	2-14-13
BD SET:	
CODE REVIEW:	
CONSTRUCTION:	
BY/AM:	BS   SN 11-30-12
CHECKED:	CC
APPROVED:	KK/FLC
REVISIONS:	